



RECP #: 752642

RECORDED 5/8/2019 AT 1:10 PM BK# 2620 PG# 1684  
Debra K. Lee, CLERK OF LARAMIE COUNTY, WY PAGE 1 OF 1

# STATE OF WYOMING CORNER RECORD

(In compliance with the CORNER PERPETUATION AND FILING ACT, Wyoming Statutes, 1997 Section 33-29-140, et. seq., and the Rules and Regulations of the Board of Registrations for Professional Engineers and Professional Land Surveyors)

## NORTHEAST CORNER SECTION 24, T. 18 N., R. 64 W., 6TH P.M., LARAMIE COUNTY, WYOMING

GLO: SET A SANDSTONE 20X12X8, 15 IN. DEEP WITH 3 MARKS ON THE NORTH AND SOUTH EDGES FOR CORNER TO SECTIONS 13, 18, 19, 24.

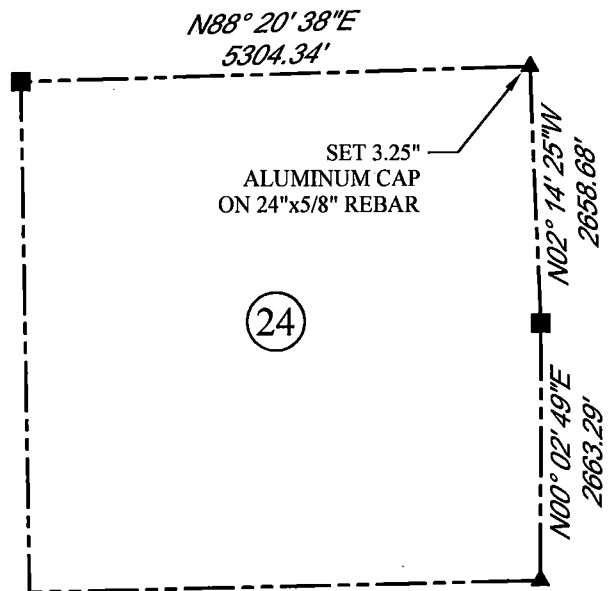
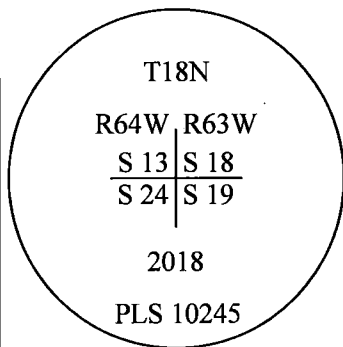
FOUND: REMAINS OF OLD SANDSTONE APPROXIMATELY. 33' EAST OF NORTH AND SOUTH FENCE LINE.



SCALE: NONE  
NORTH DETERMINED BY  
G.P.S OBSERVATIONS

FOUND: REMAINS OF SANDSTONE

SET 3.25" ALUMINUM CAP ON #5 REBAR, 2"  
BELOW SURFACE STAMPED AS SHOWN.  
CORNER IS SET AMONGST TO SANDSTONE  
REMAINS.



### LEGEND:

- FOUND BLM CAP
- FOUND USFS CAP
- FOUND STONE
- FOUND PRIVATE MONUMENT
- CALCULATED POSITION
- ▲ SET MONUMENT (LS10245)
- SECTION LINE

DATE OF FIELD WORK: 9/24/2018 OFFICE REFERENCE: MERIDEN

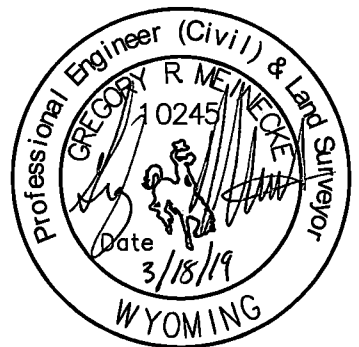
### CROSS INDEX DIAGRAM

A	1	2	3	4	5	6	7	8	9	10	11	12	13	14	15	16	17	18	19	20	21	22	23	24	25	A	
B																										B	
C			6				5					4					3							2			C
D																											D
E																											E
F																											F
G																											G
H																											H
J																											J
K																											K
L																											L
M																											M
N																											N
O																											O
P																											P
Q																											Q
R																											R
S																											S
T																											T
U																											U
V																											V
W																											W
X																											X
Y																											Y
Z																											Z

WOOD  
2615 AVIATION DRIVE  
SHERIDAN, WY 82801  
PH: 307-675-6400



THIS CORNER RECORD WAS  
PREPARED BY ME OR UNDER  
MY DIRECTION AND  
SUPERVISION,  
SEAL AND SIGNATURE



CORNER NAME: NORTHEAST SECTION: 24 T. 18 N., R. 64 W. ; 6TH P.M. CROSS-INDEX # N-25  
SBRPELS/PLSW: MARCH 1994; PLSW JANUARY 1998